



## Bench-top Wave Soldering Machine



WSM 180 / WSM 300

Cost-effective solutions for electronic industry

## The WSM 180S, 180D, 300S & 300D

eps make WSM models are compact, microprocessor controlled, automatic, with proven performance. Machines can process assemblies up to 12" wide and require very little solder for their size. The single or dual wave systems come complete with Conveyor, Foam Fluxer with Integral Air Compressor, Preheaters, Stainless Steel Solder Pot with drain valve

### System Features

- Single or dual wave
- Stainless steel solder pot
- Stainless steel foam fluxer
- Computer control includes:
  - 10 menu storage
  - RS 232 serial interface
  - SPC online or offline data logging.
  - Fault monitoring & reporting
  - Low solder indicator
- On board air compressor
- Dual preheaters with heat tunnel and forced air convection
- Wave and flux interval sensors
- Status light tower
- Slide-out fluxer with drip tray
- Solder drain
- Compatible with VOC free fluxes

### Options

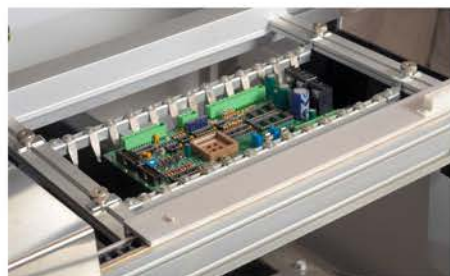
- Lead free option
- Enclosed stand
- Flux air-knife
- Extra-long pallets
- Nitrogen inerting
- Spray Fluxer

### Efficient yet Economical

The benchtop series of Wave Soldering Machine is the economical solution for easy start-up of PCB production... solid, dependable, yet cost effective.

### Production Specification

	WSM 180 Single Wave	WSM 180 Duel Wave	WSM 300 Single Wave	WSM 300 Duel Wave
Power	220 / 410 VAC 1/3 phase	220 / 410 VAC 1/3 phase	410 VAC 3 phase	410 VAC 3 phase
Foam Fluxer Tank	0.5 gal/2 ltrs	0.5 gal/2 ltrs	0.8 gal/3 ltrs	0.8 gal/3 ltrs
Solder Pot Capacity	125 lbs/57 kgs	242 lbs/110 kgs	200 lbs/90 kgs	375 lbs/170 kgs
Max Wave Height	0-3/8" /0-10 mm	0-3/8" /0-10 mm	0-3/8" /0-10 mm	0-3/8" /0-10 mm
Wave Width	7" / 180 mm	7" / 180 mm	11.8" / 300 mm	11.8" / 300 mm
Max Preheat Temp	300°F /200°C	300°F /200°C	300°F /200°C	300°F /200°C
Preheat 1 Power	2.25 kw	2.25 kw	4.0 kw	4.0 kw
Preheat 2 Power	1.5 kw	1.5 kw	2.0 kw	2.0 kw
Max Solder Pot Temp	575°F /300°C	575°F /300°C	575°F /300°C	575°F /300°C
Lead Free Pot Temp	662°F /350°C	662°F /350°C	662°F /350°C	662°F /350°C
Solder Pot Power	2.5 kw	3.2 kw	3.6 kw	5.2 kw
Approx Warm-up Time	40 min.	40 min.	50 min.	50 min.
Max Conveyor Speed	6 ft/min (2m/min)	6 ft/min (2m/min)	6 ft/min (2m/min)	6 ft/min (2m/min)
Pallets	7"x 11.4" 180 x 290 mm	7"x 11.4" 180 x 290 mm	12"x 15.8" 300 x 400 mm	12"x 15.8" 300 x 400 mm
Length	96.5" 2451 mm	96.5" 2451 mm	118" 2997 mm	118" 2997 mm
Width	31" / 788 mm	31" / 788 mm	39" / 991 mm	39" / 991 mm
Height	22" / 560 mm	22" / 560 mm	26" / 660 mm	26" / 660 mm
Exhaust Requirement	300 CFM /500 m <sup>3</sup> / h max., 4" /100 mm dia flange			



eps worldwide pvt. ltd.

S. No. 145, Garmal, Dhayari, Pune : 411041. INDIA

Tel.: +91-20-24394527 / 24392715 / 24102200 Fax : +91-20-24393204/24102204

Email : admin@eps-ww.com Web : www.eps-ww.com